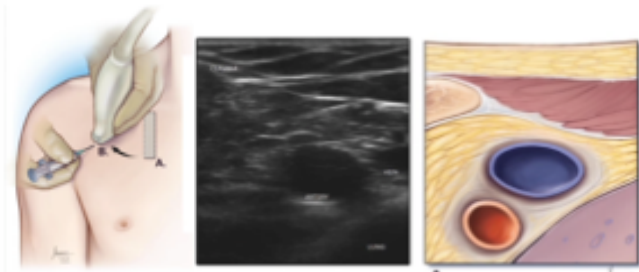


# Ultrasound Guided Subclavian Line

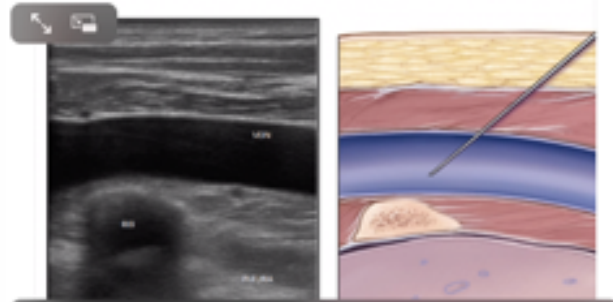
1. <http://www.ultrasoundpodcast.com/2017/11/part-method-us-guided-subclavian-cvcs-mourad-senussi/>
2. Uses the rib as a barrier to prevent pneumothorax (PART: Pleural Avoidance Rib Trajectory)
3. Put linear probe on chest, find the clavicle and look for SC/Axillary vein under the clavicle



4. Move the probe laterally to approach the deltoid-pectoral groove and turn it almost 90 degrees to get into an axial plane.
5. Insert the needle in long axis in SC/axillary vein just inferior to the clavicle.



6. Find underlying rib and aim the needle right at it.



- 7.
8. Facilitates use of micro-puncture if vein collapsible as one can pin the vein down deliberately puncture it and then pull back to cannulate.
9. Also allows compression against the rib if inadvertently hit an artery.